

Circuit Diagram

**Finisher, Sorter, Delivery Tray
Finisher-T1**

Canon

IMPORTANT

This documentation is published by Canon Inc., Japan, to serve as a source of reference for work in the field.

Specifications and other information contained herein may vary slightly from actual machine values or those found in advertising and other printed matter.

Any questions regarding the information contained herein should be directed to the Copier Service Department of the Sales Company.

This documentation is intended for all sales areas, and may contain information not applicable to certain areas.

Reproduction without permission not allowed.

Use of this manual should be strictly supervised to avoid disclosure of confidential information.

COPYRIGHT 2001 CANON INC.

Printed in Japan

Caution

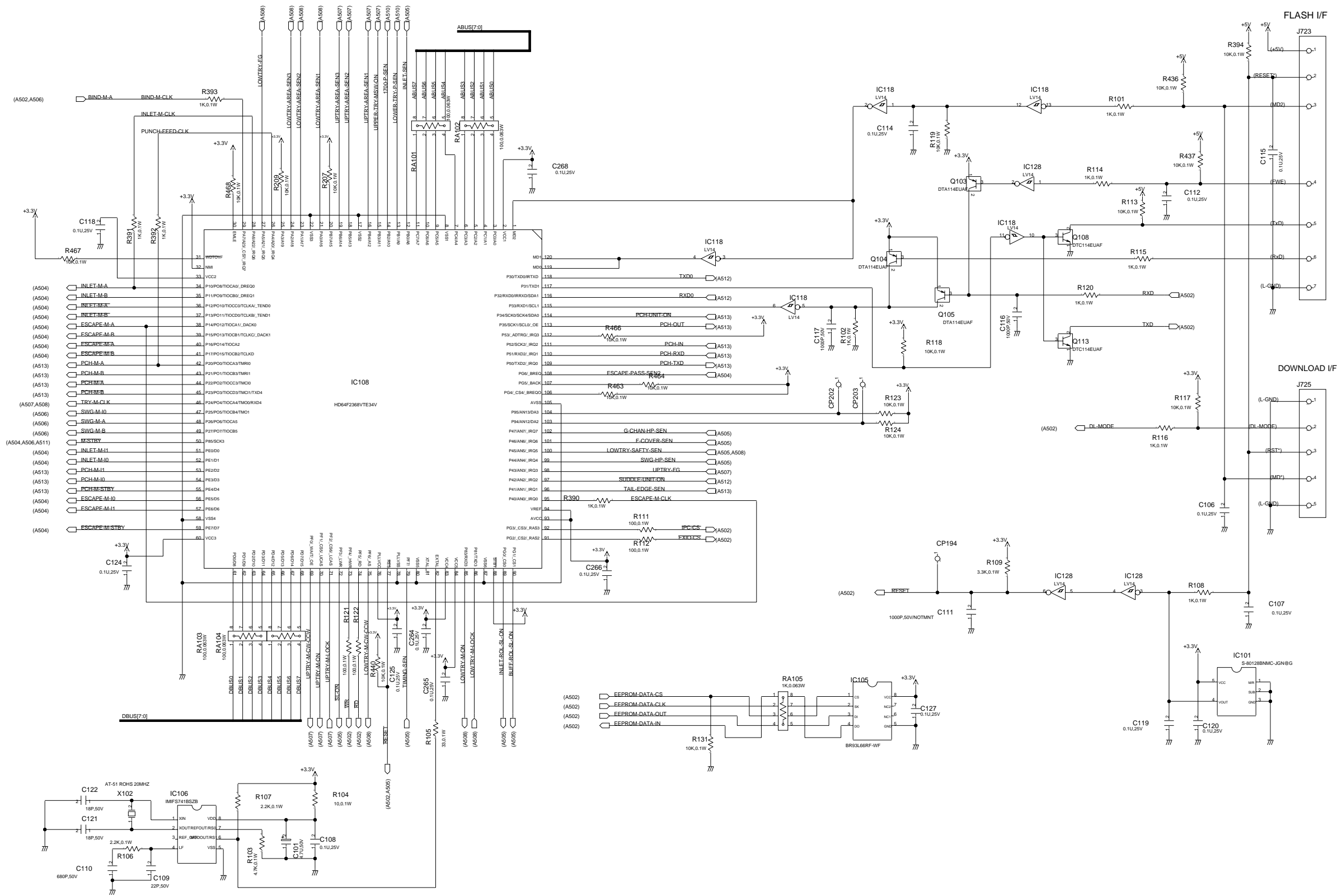
Use of this manual should be strictly supervised to avoid disclosure of confidential information.

Contents

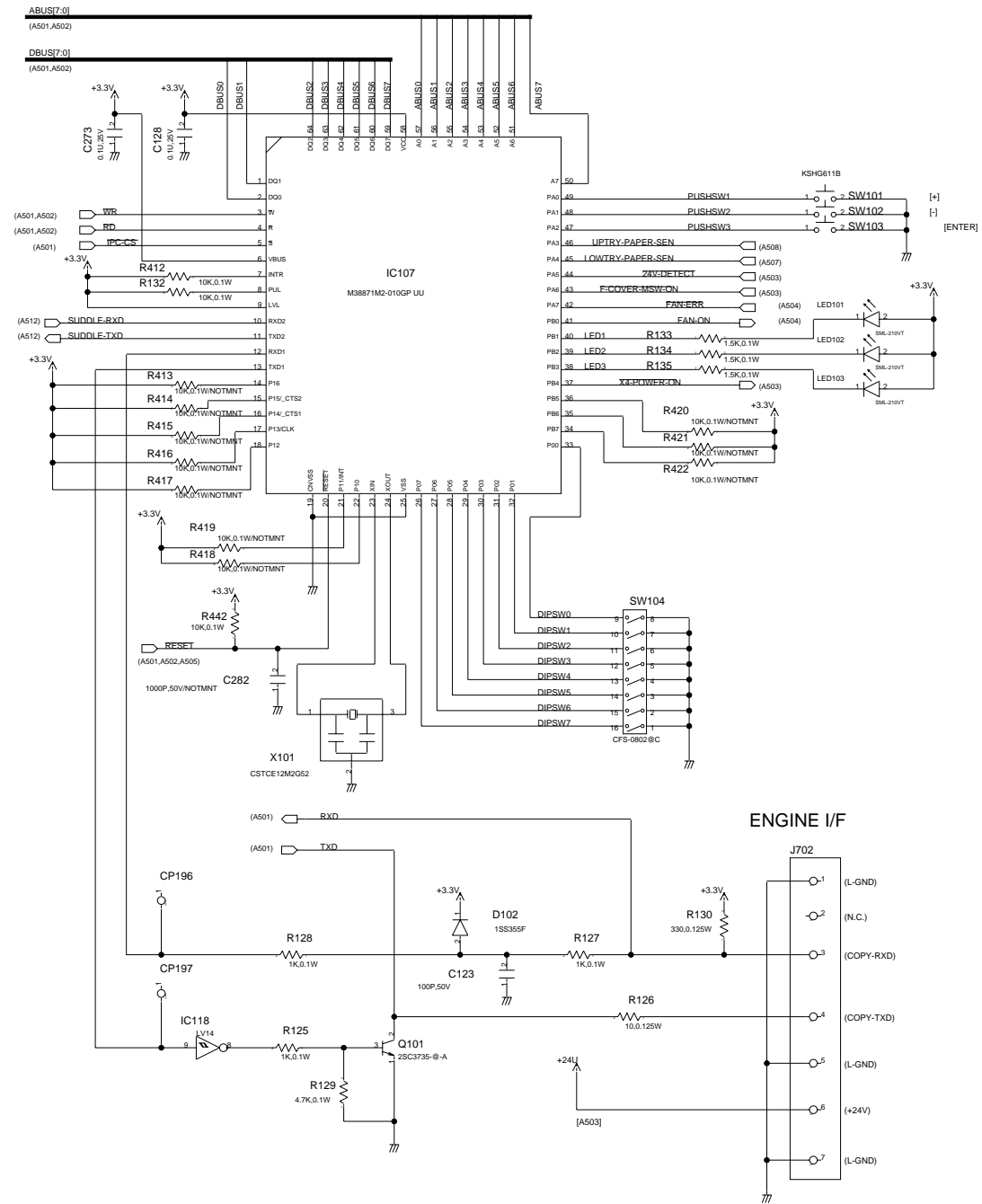
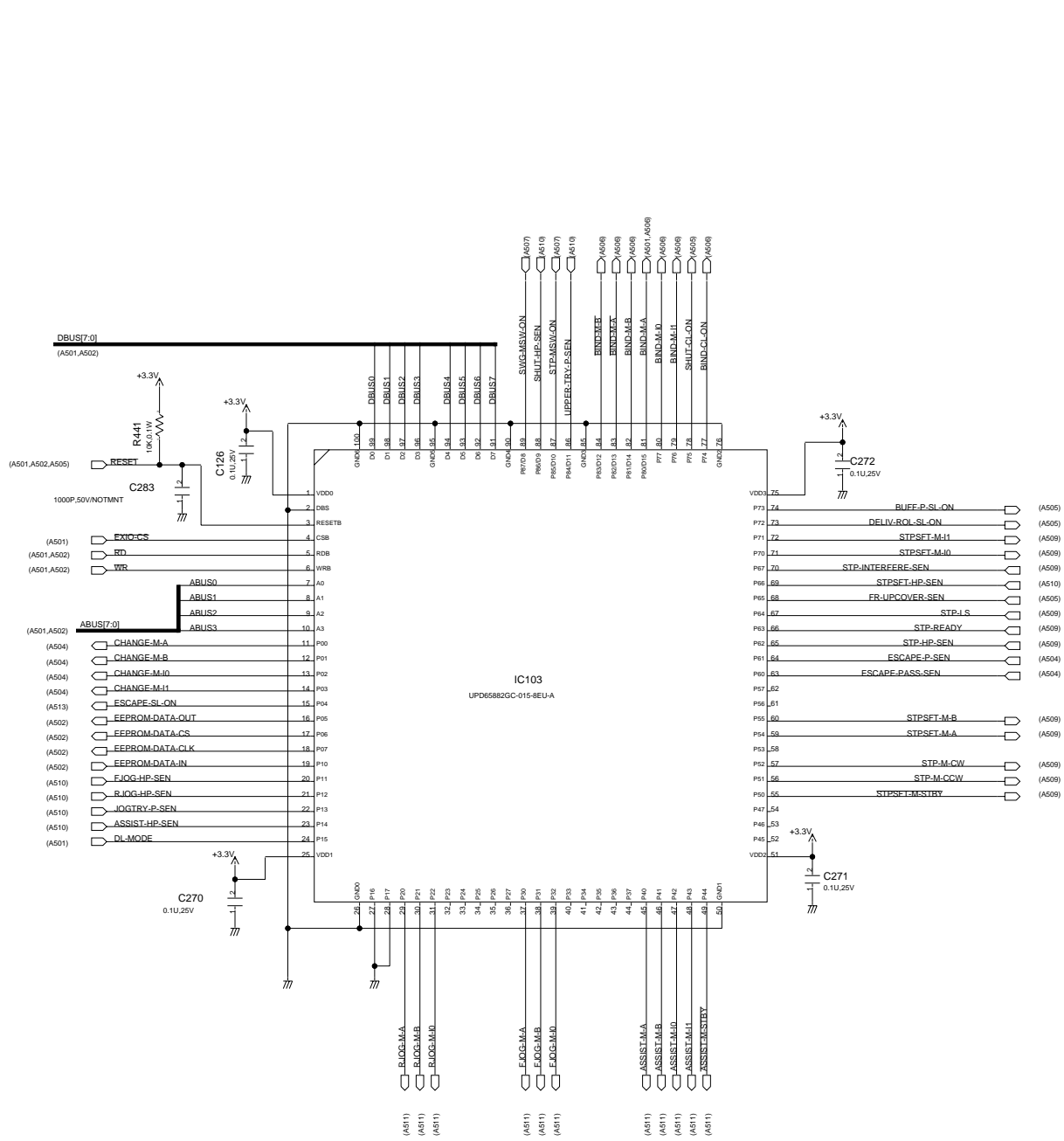
1 Finisher Controller PCB.....	1
Finisher Controller PCB(A501)	1
Finisher Controller PCB(A502)	2
Finisher Controller PCB(A503)	3
Finisher Controller PCB(A504)	4
Finisher Controller PCB(A505)	5
Finisher Controller PCB(A506)	6
Finisher Controller PCB(A507)	7
Finisher Controller PCB(A508)	8
Finisher Controller PCB(A509)	9
Finisher Controller PCB(A510)	10
Finisher Controller PCB(A511)	11
Finisher Controller PCB(A512)	12
Finisher Controller PCB(A513)	13
Finisher Controller PCB(A514)	14
2 Stapler PCB 1	15
Stapler PCB1	15
3 Stapler PCB 2	17
Stapler PCB2	17
4 Tray2 Shift Area Sensor PCB	19
Tray1/Tray2 Shift Area Sensor PCB.....	19
5 Feeder Driver PCB	21
Feeder Driver PCB (1/2)	21
Feeder Driver PCB (2/2)	22

1 Finisher Controller PCB

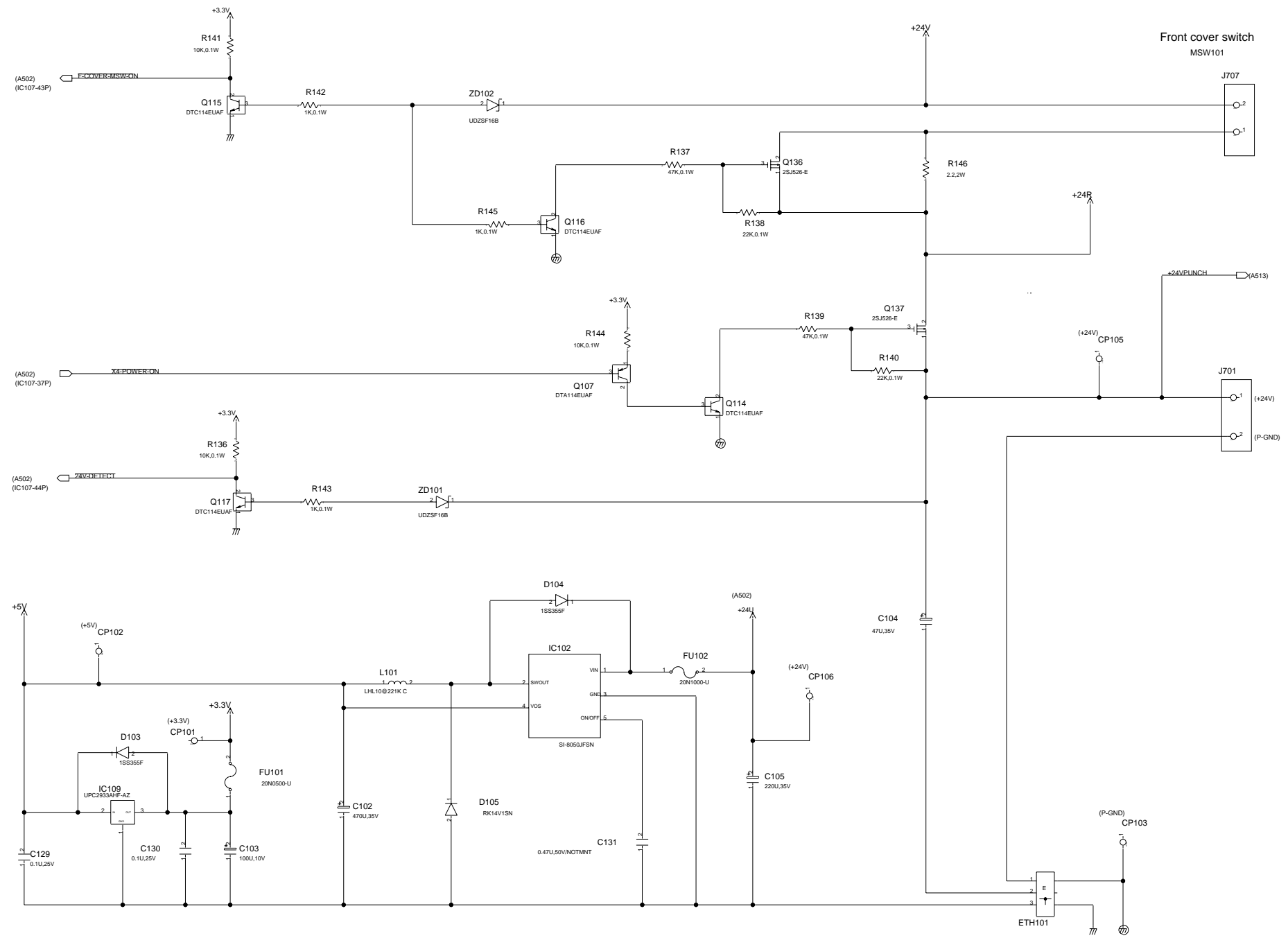
Finisher Controller PCB(A501)



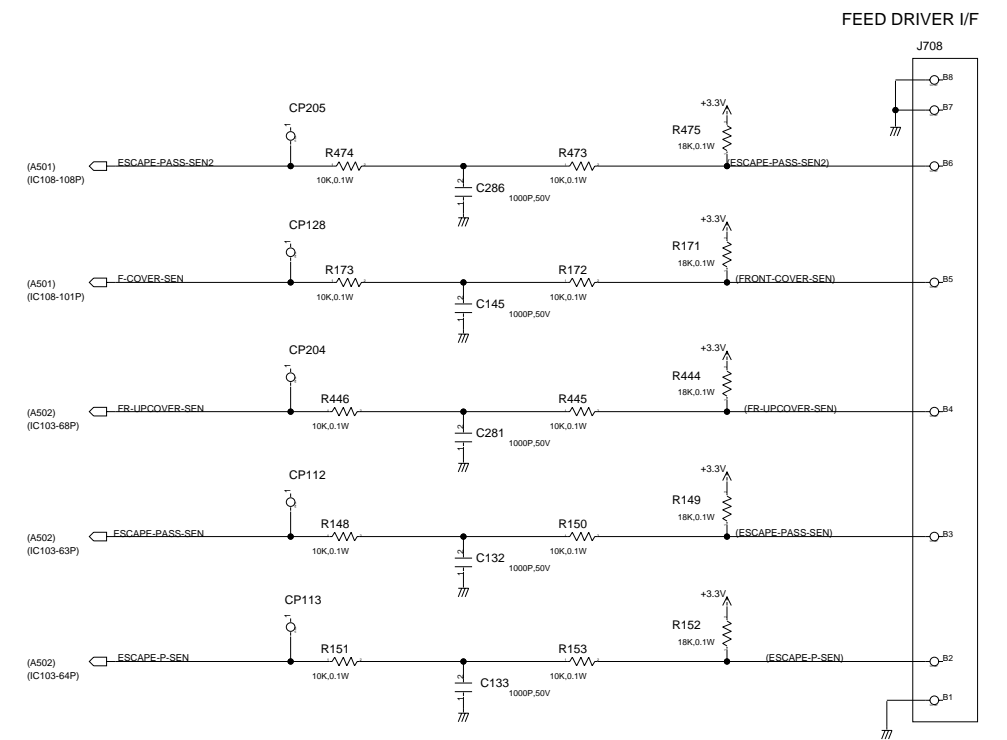
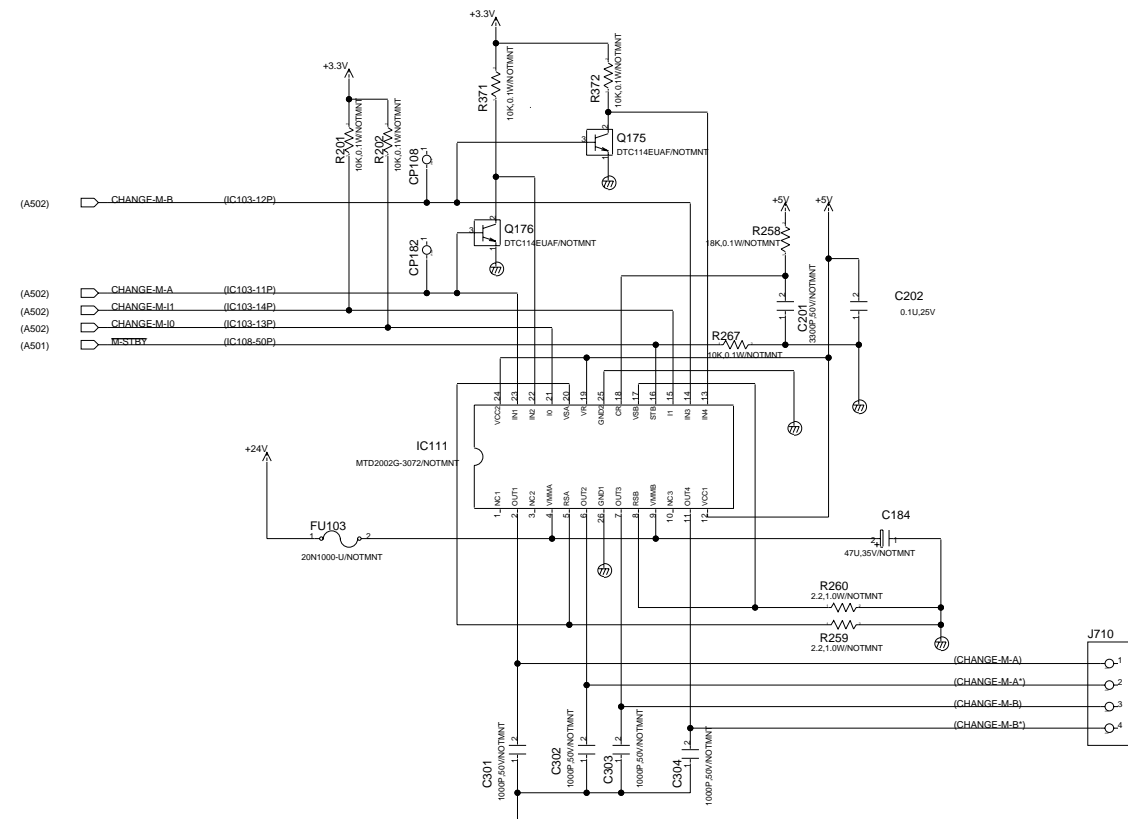
F-1-1



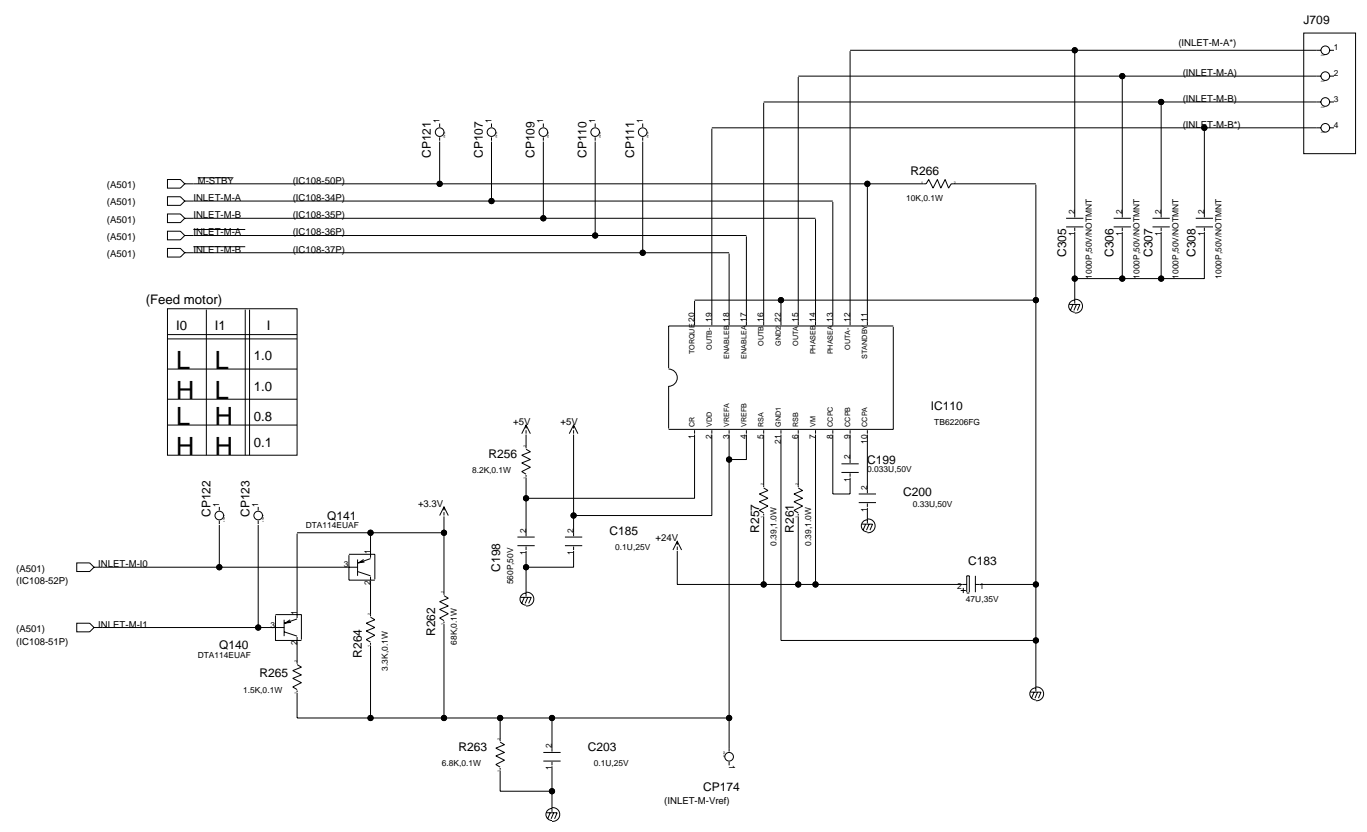
F-1-2



F-1-3

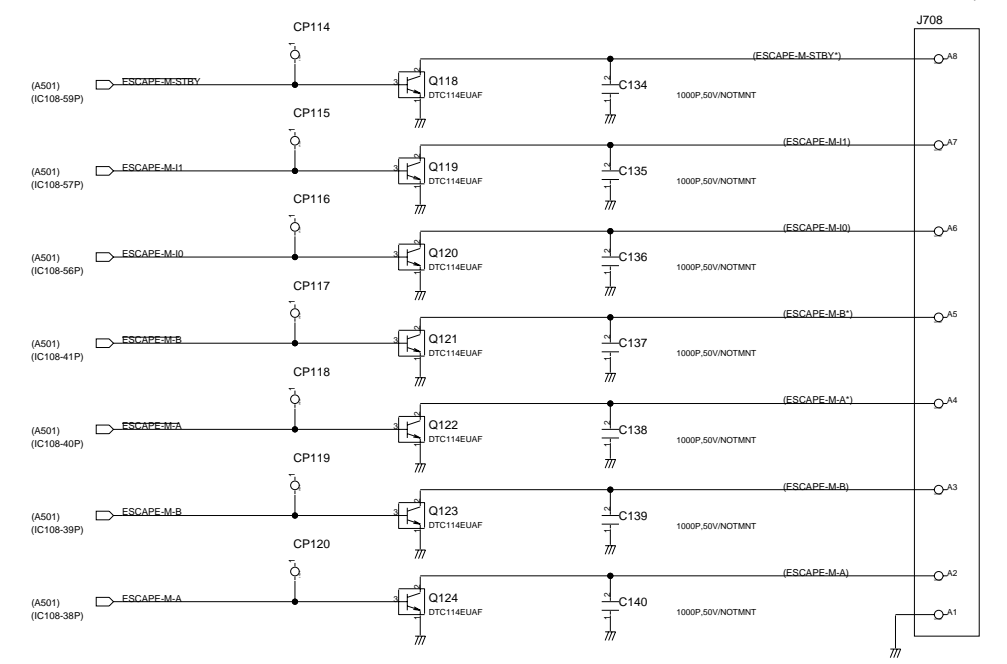


Feed motor M101

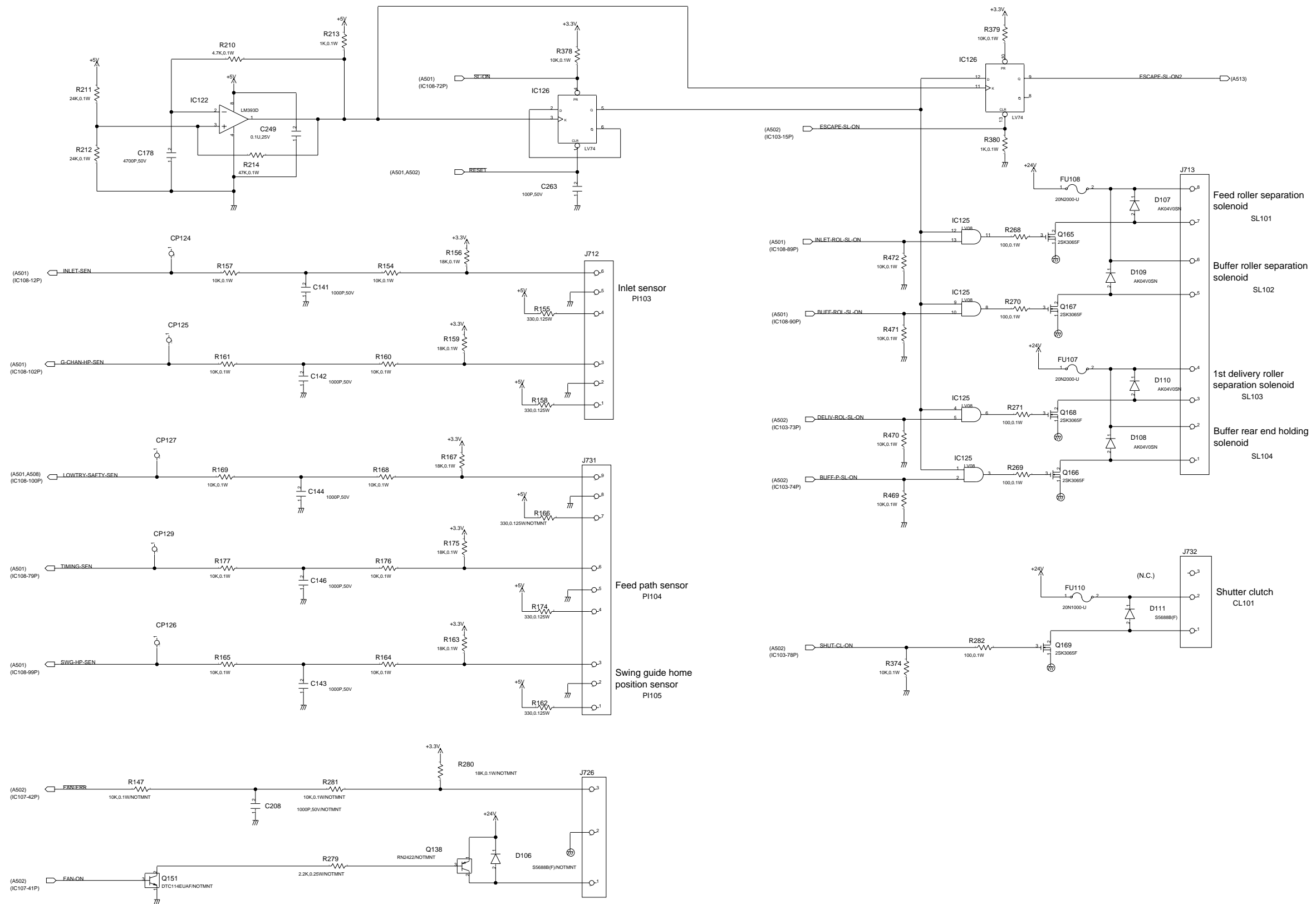


(Feed motor)

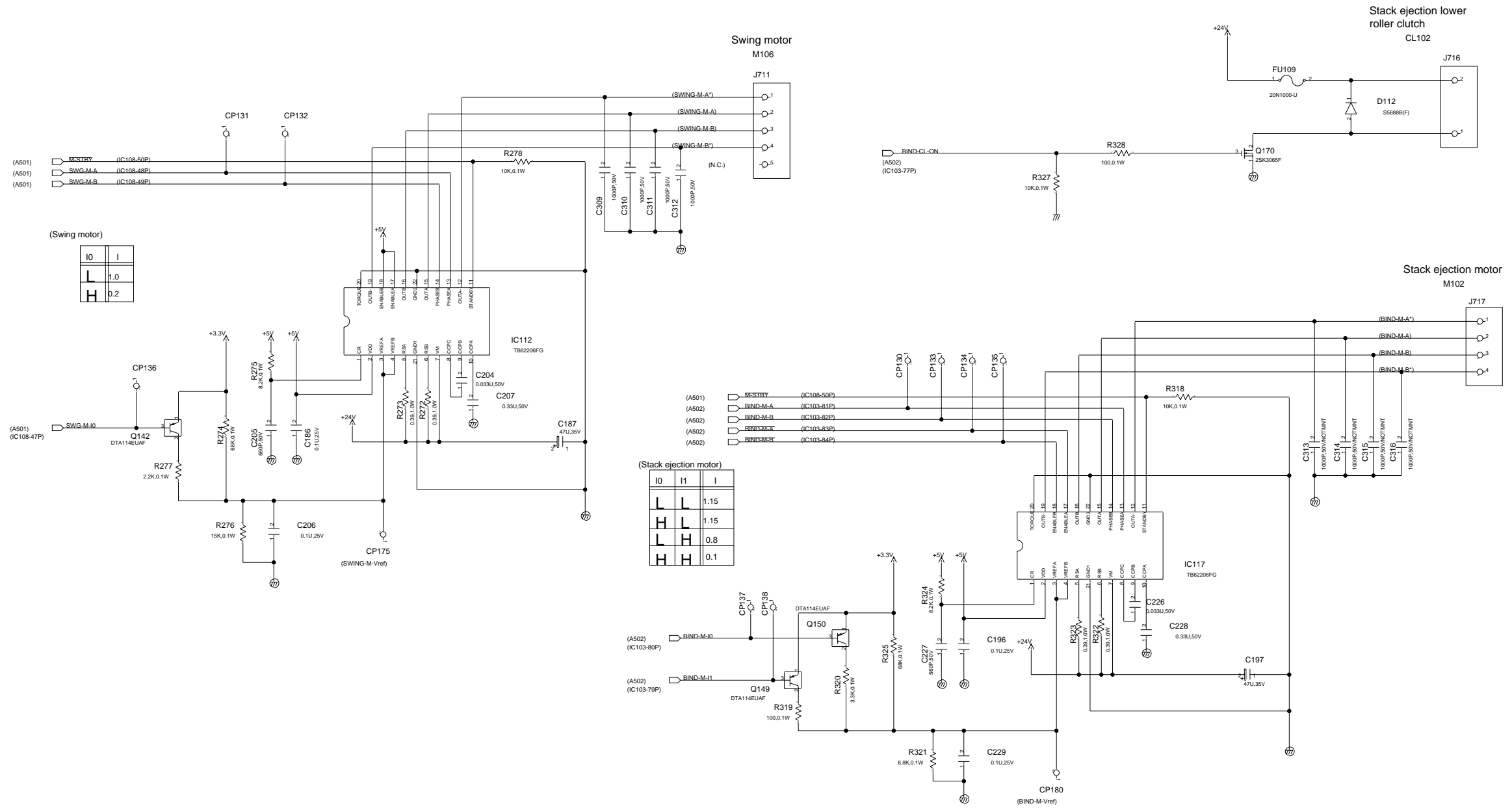
IO	I1	I
L	L	1.0
H	L	1.0
L	H	0.8
H	H	0.1



Finisher Controller PCB(A505)

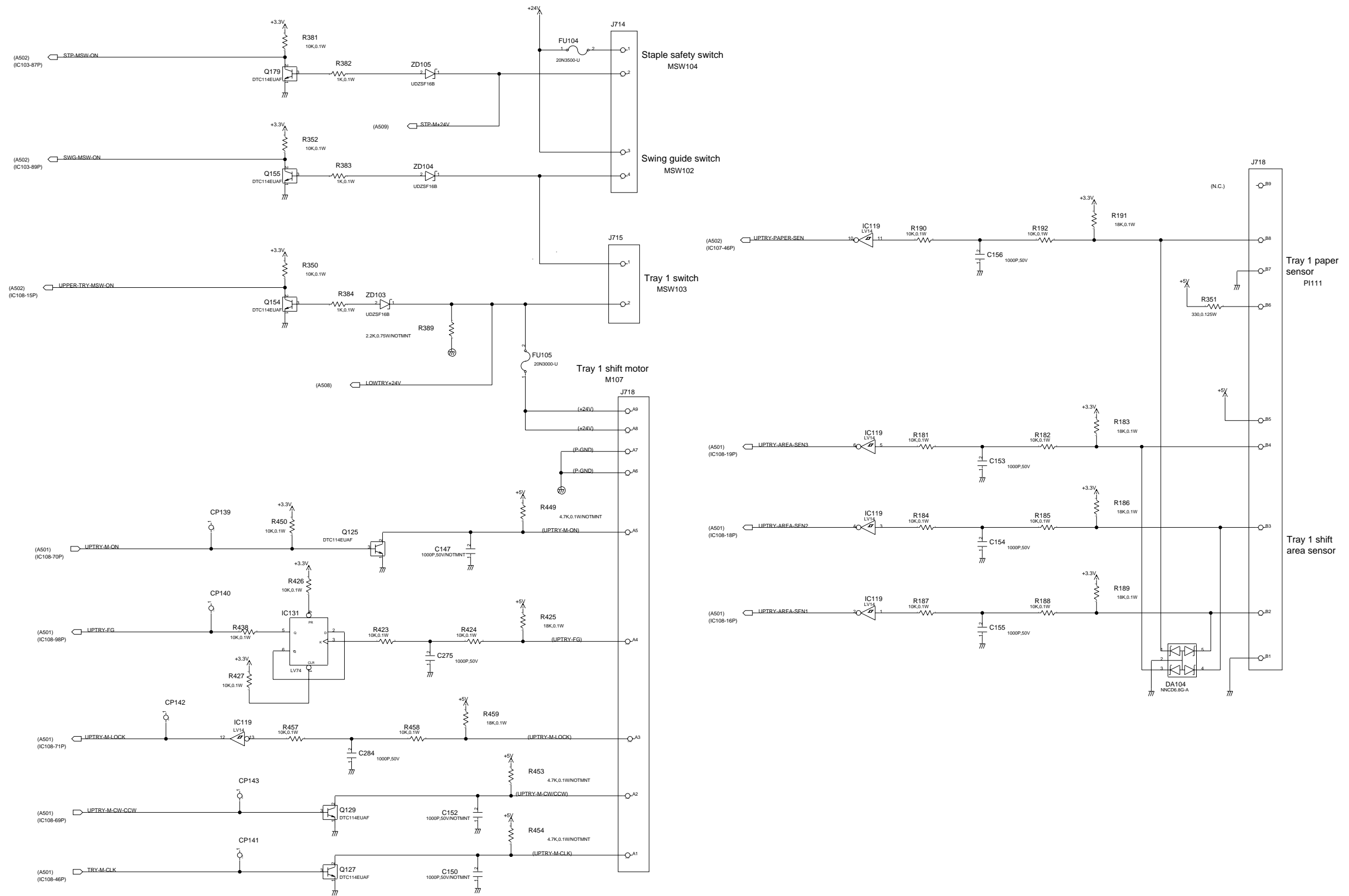


F-1-5

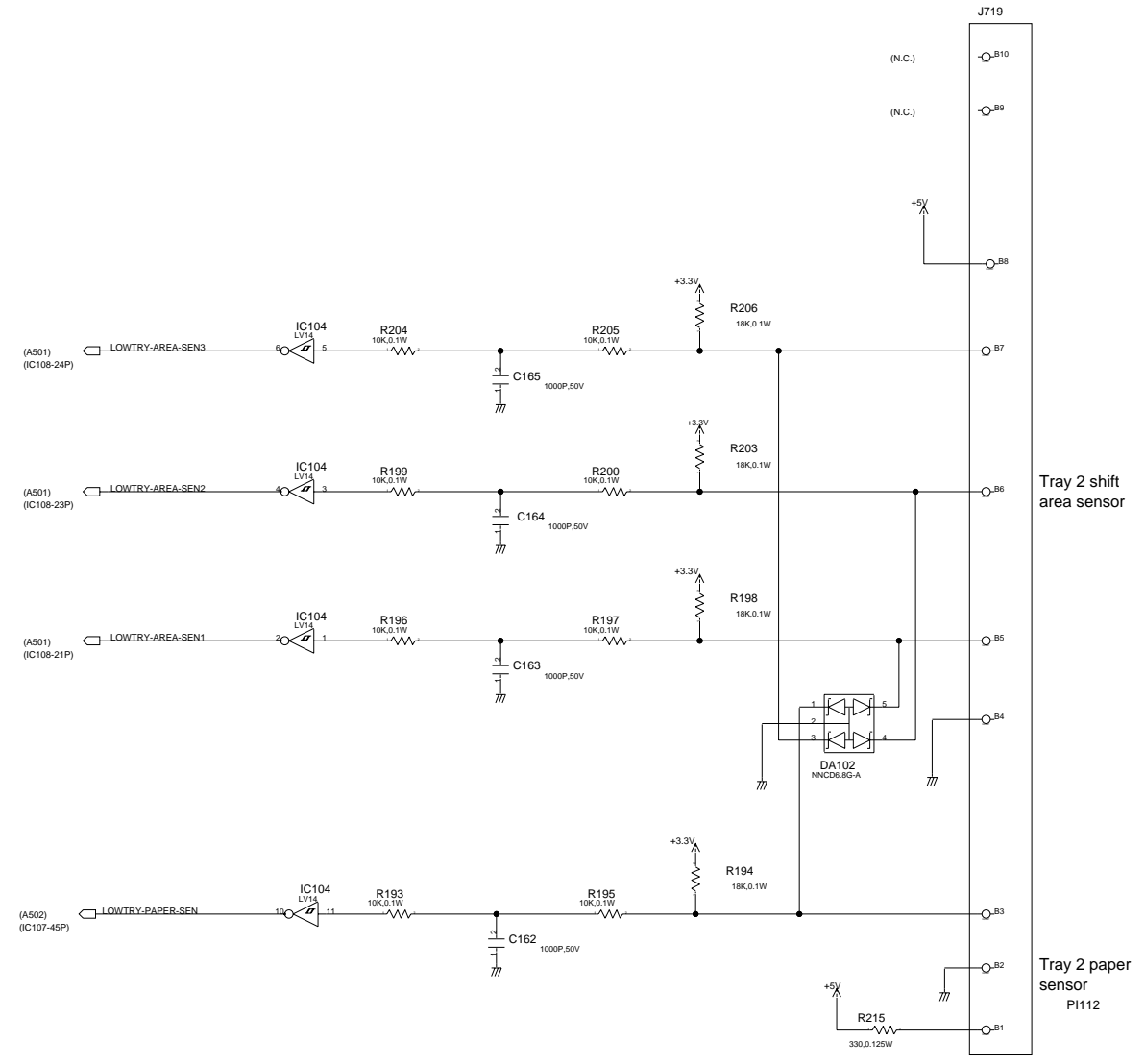
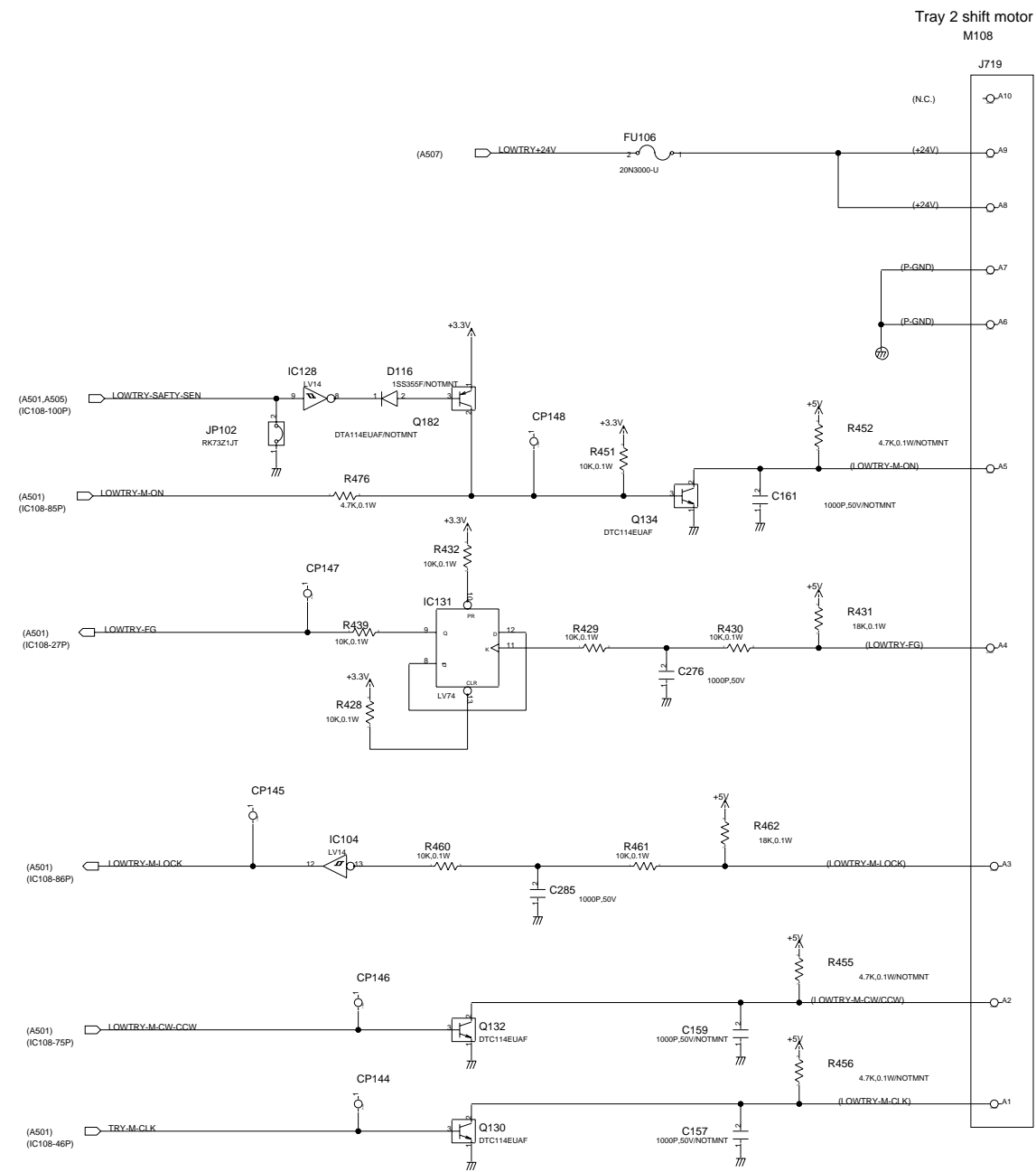


F-1-6

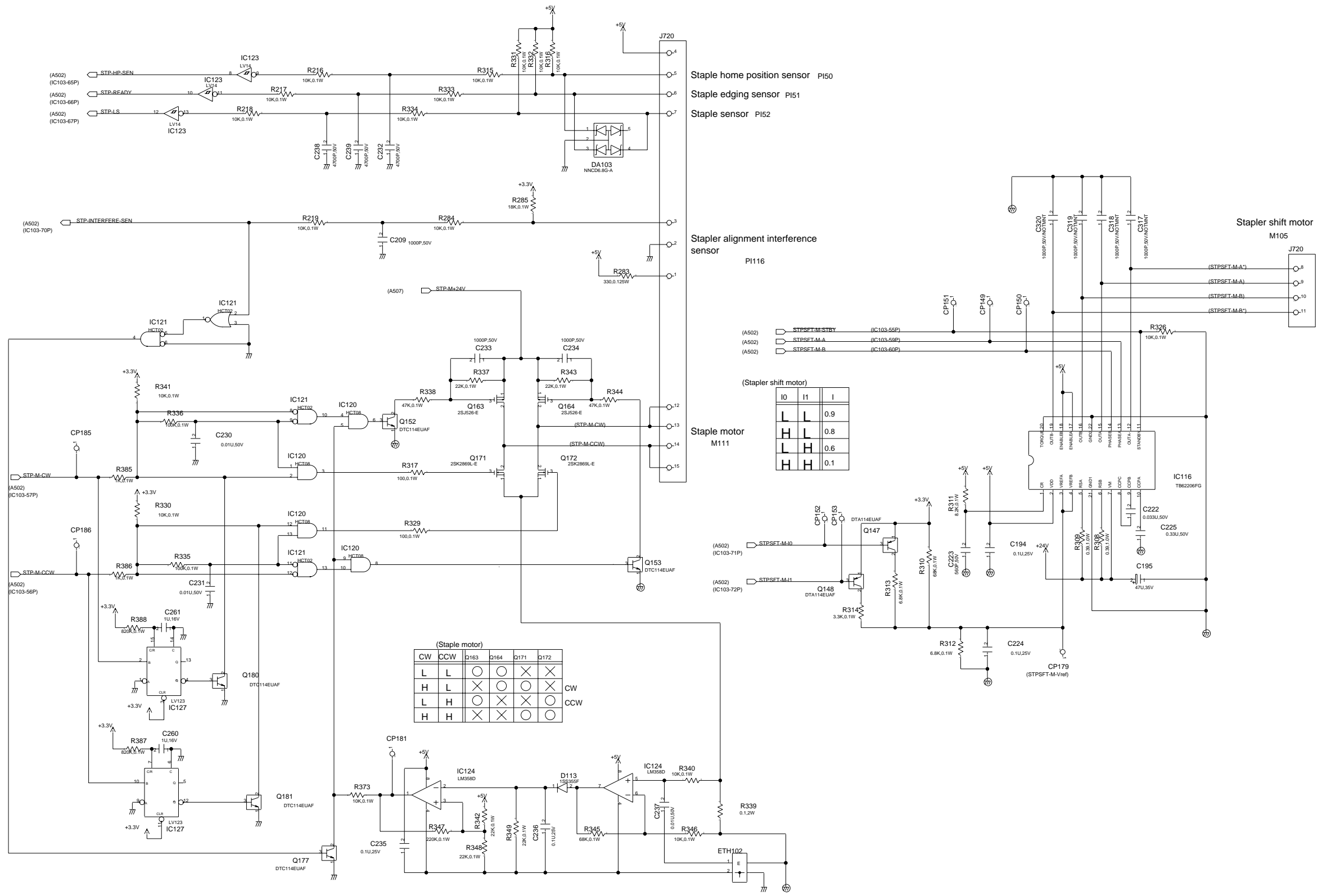
Finisher Controller PCB(A507)



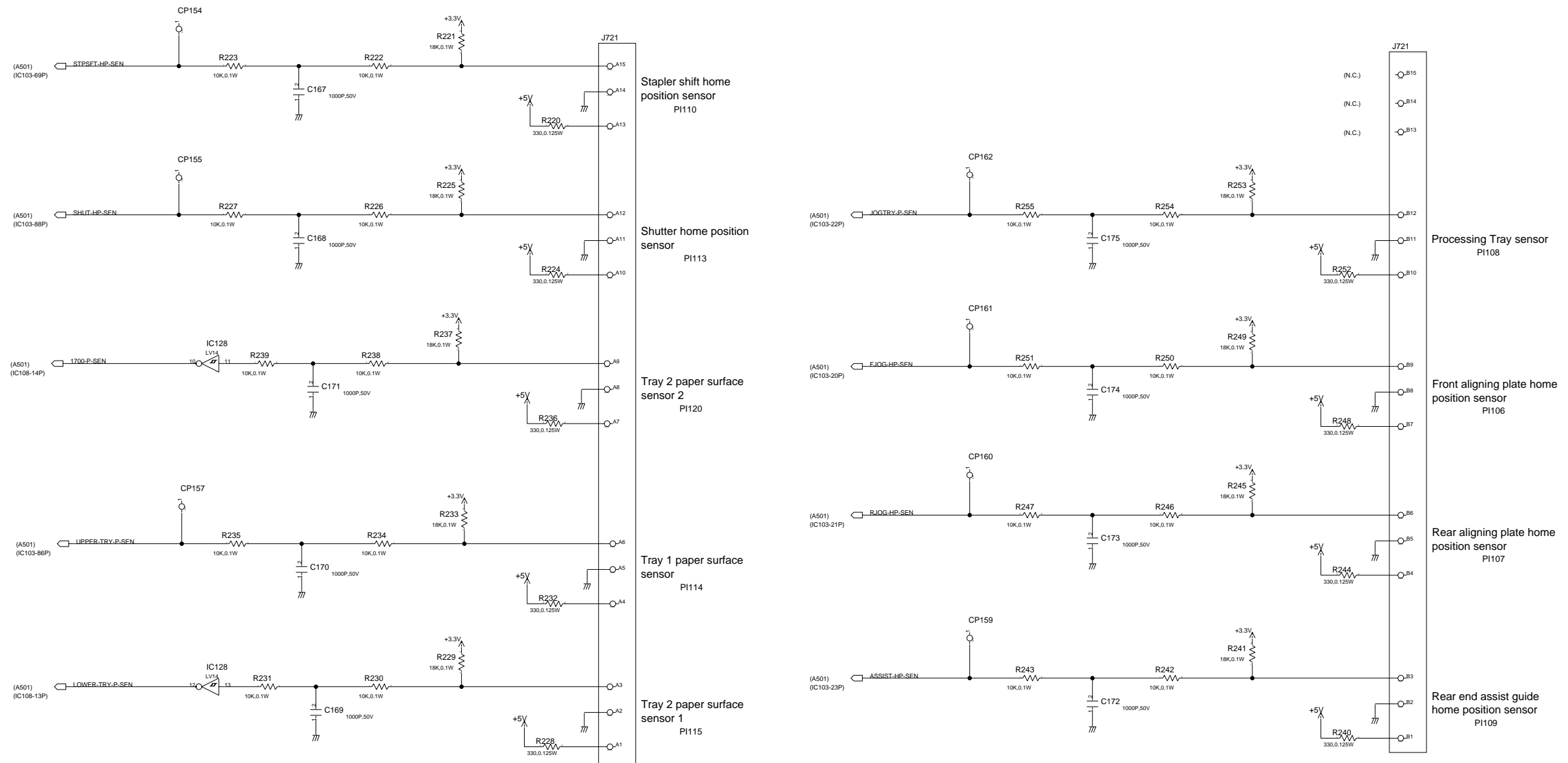
F-1-7



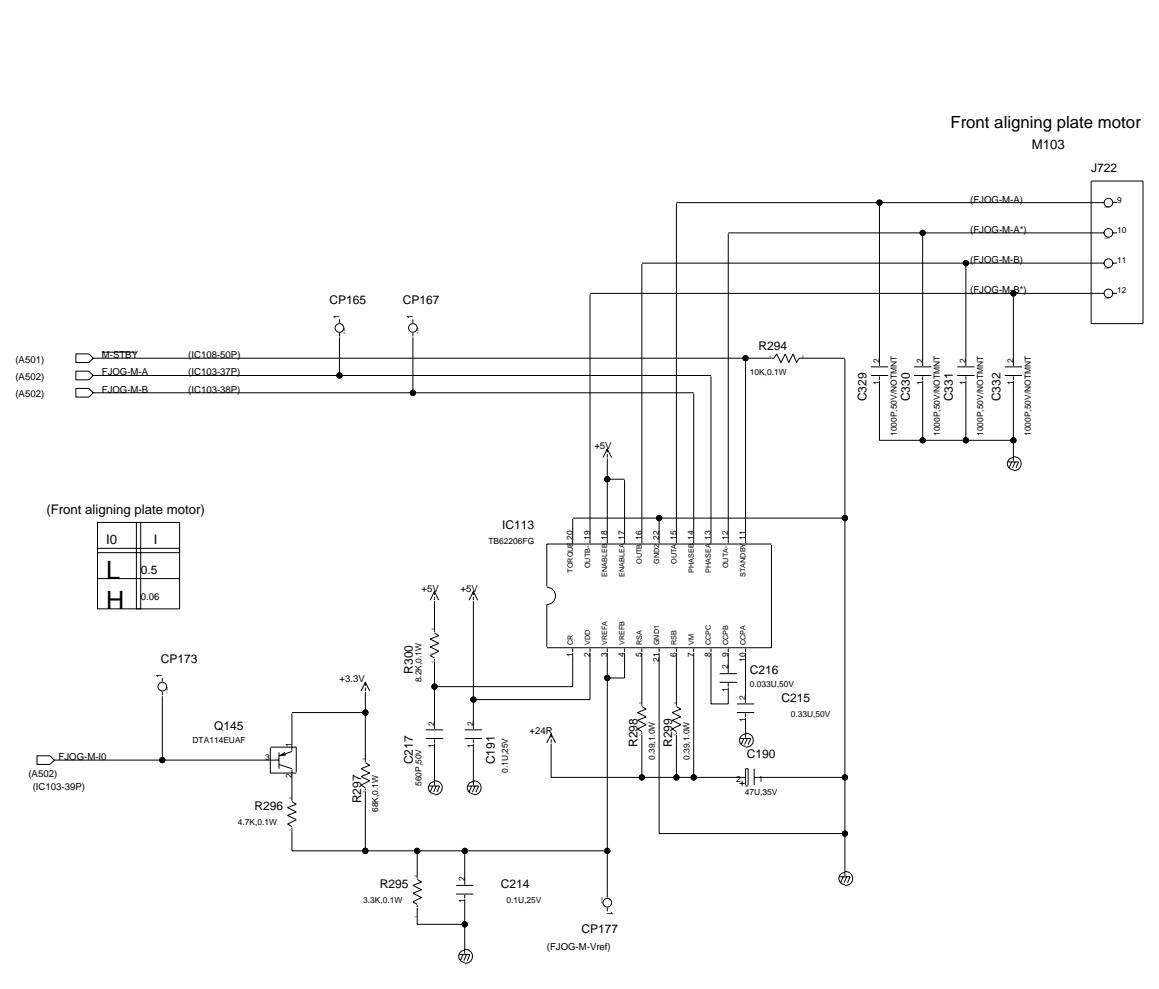
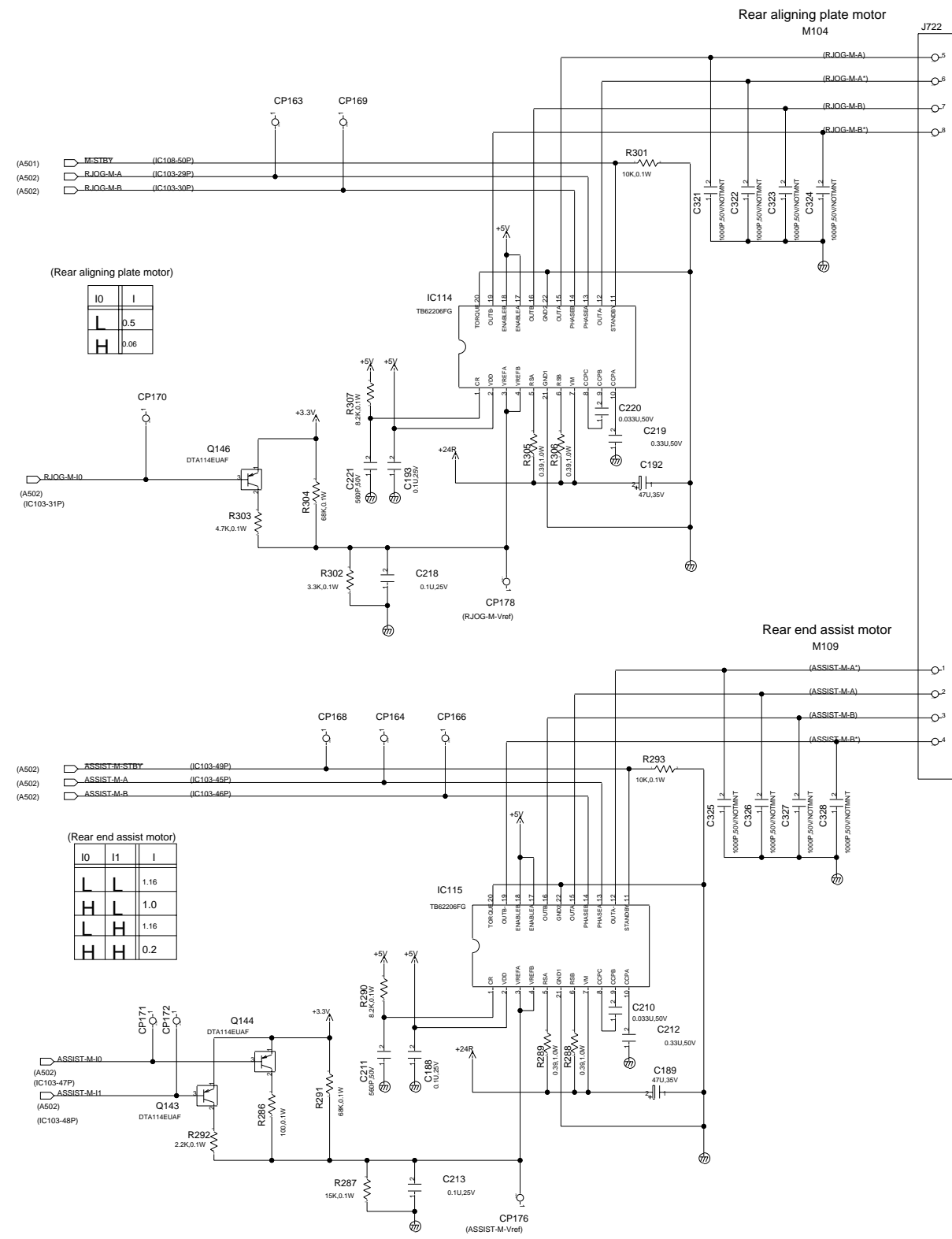
F-1-8



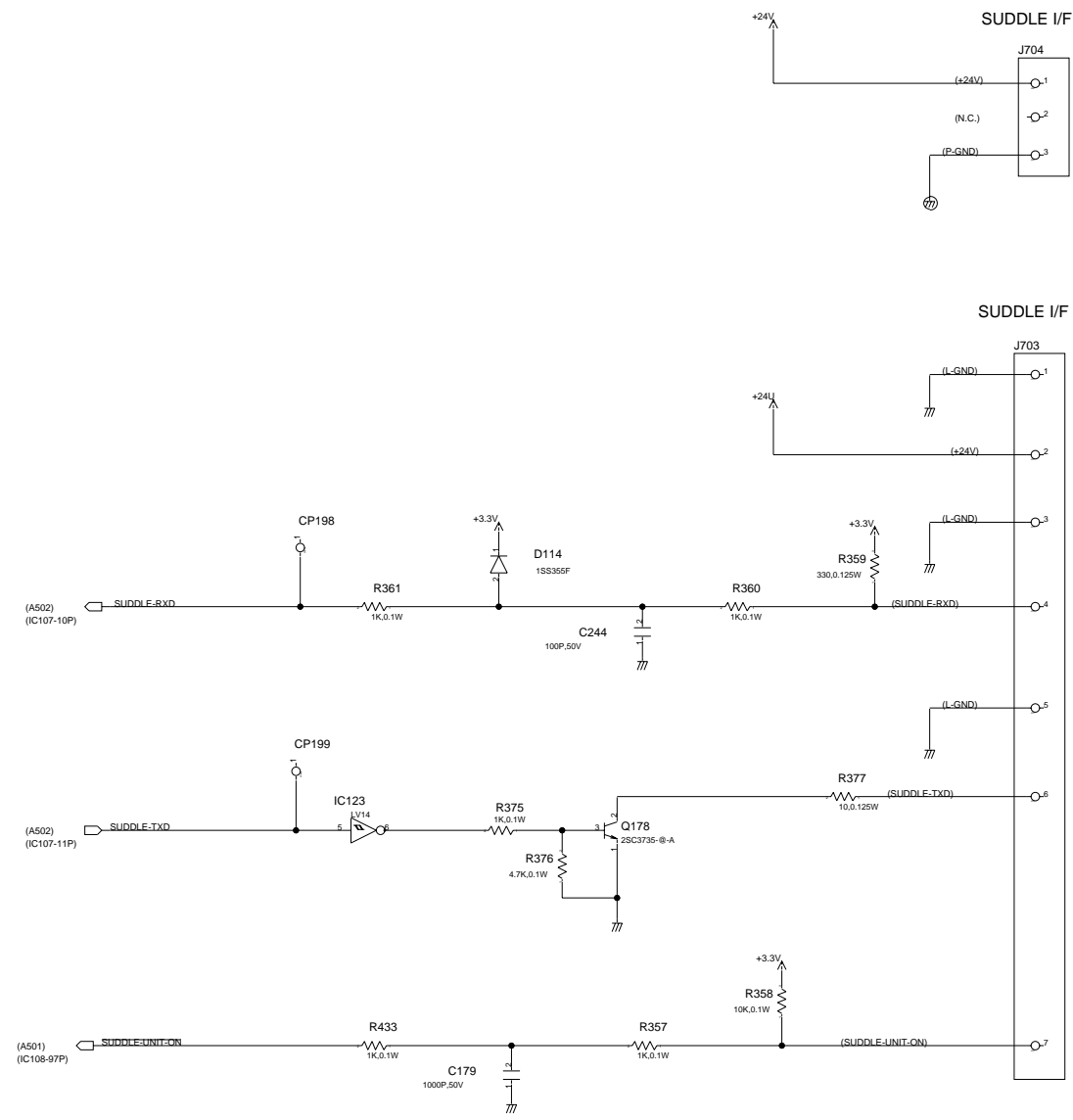
F-1-9



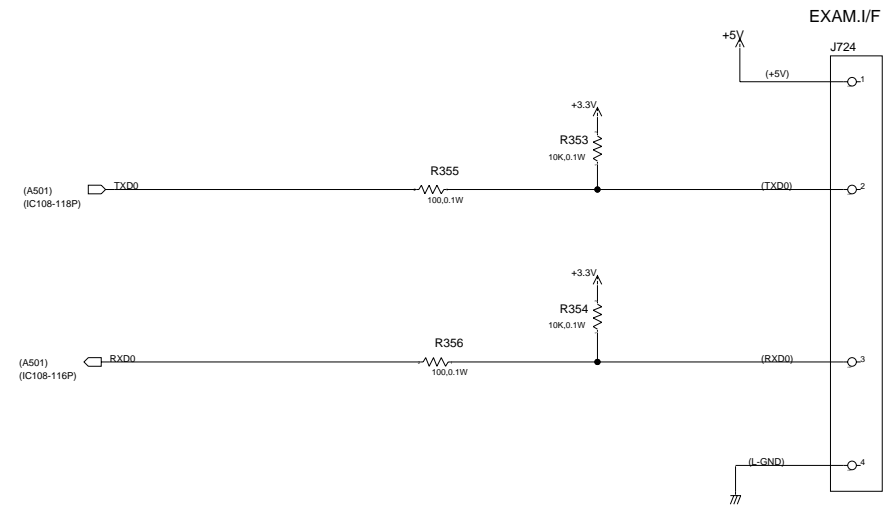
F-1-10

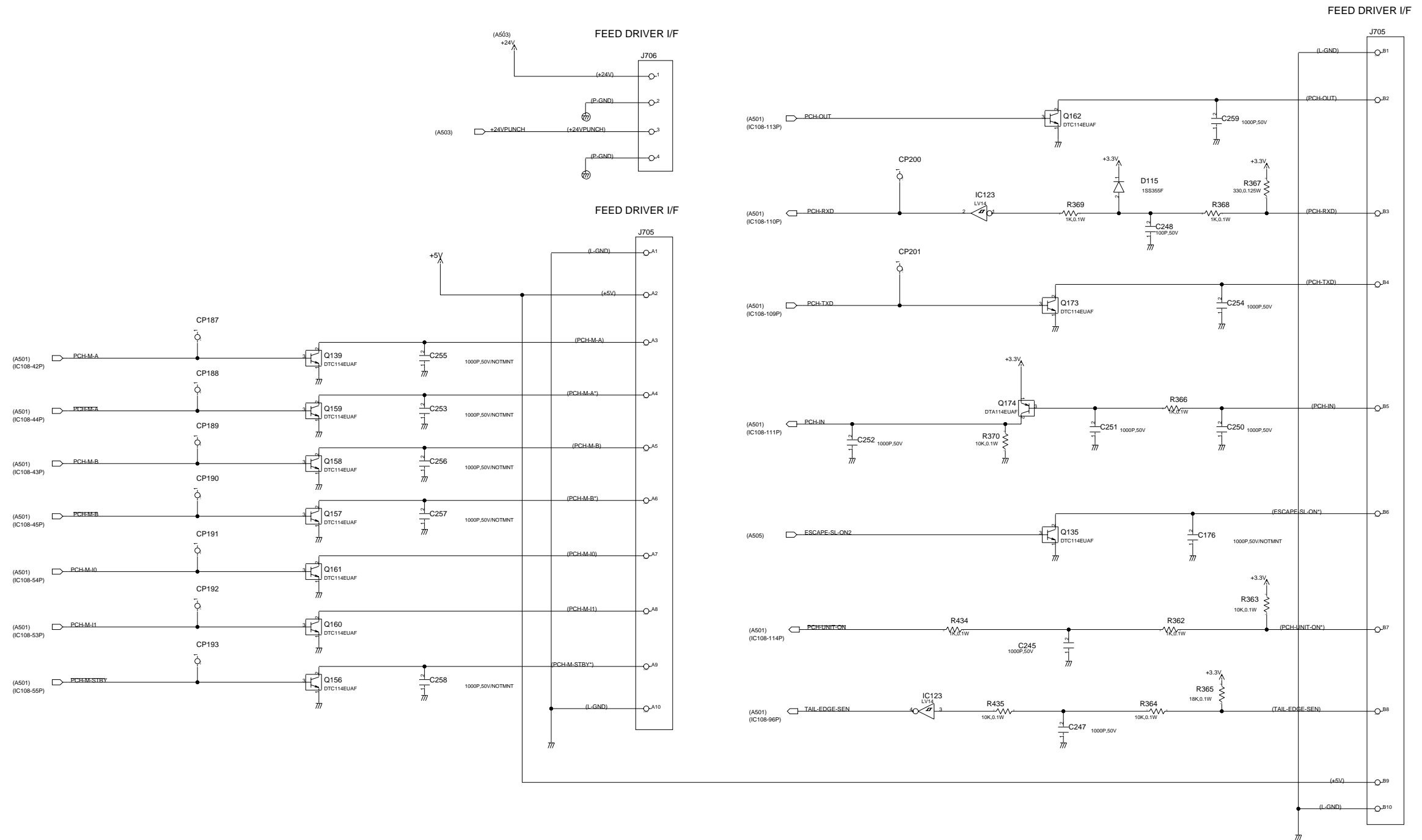


F-1-11



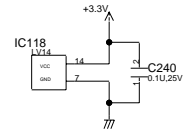
F-1-12



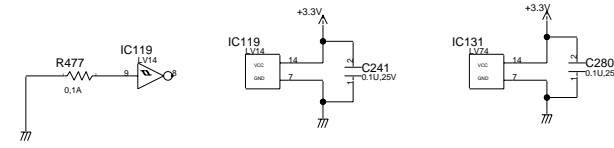


F-1-13

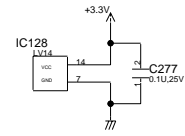
Engine I/F
Flash I/F



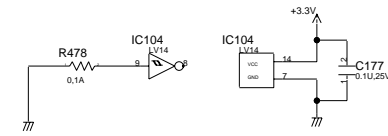
Tray 1 shift area sensor



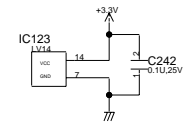
Flash I/F
Sensor



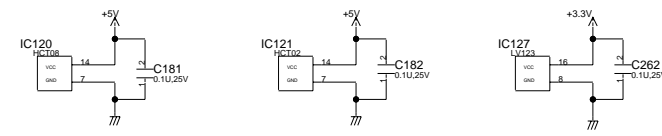
Tray 2 shift area sensor



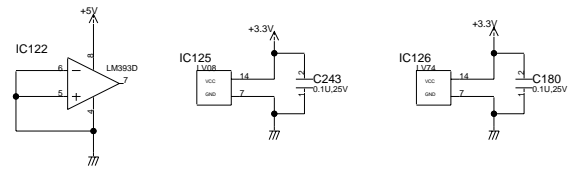
Staple motor
Saddle I/F
Punch I/F



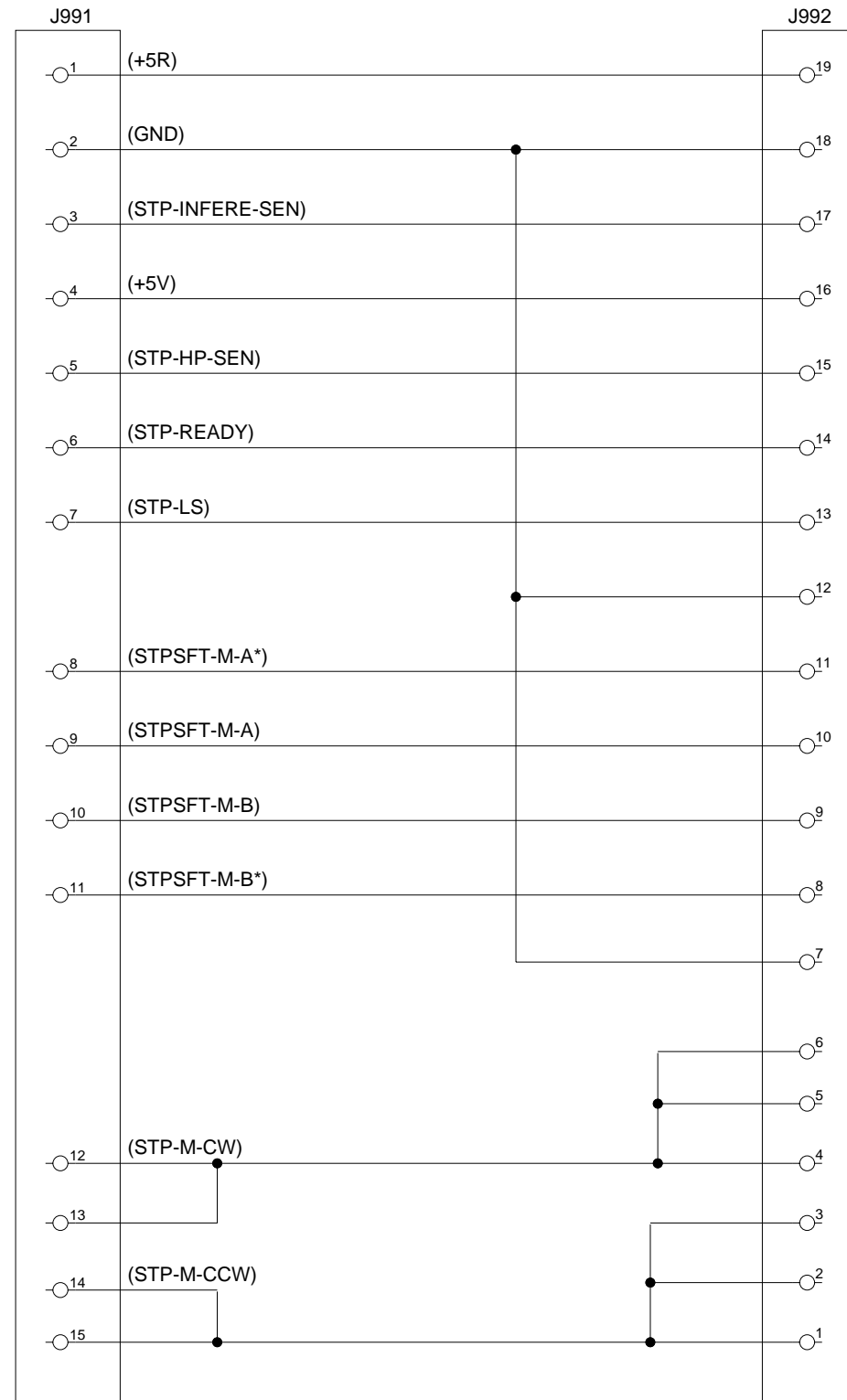
Staple motor



Solenoido

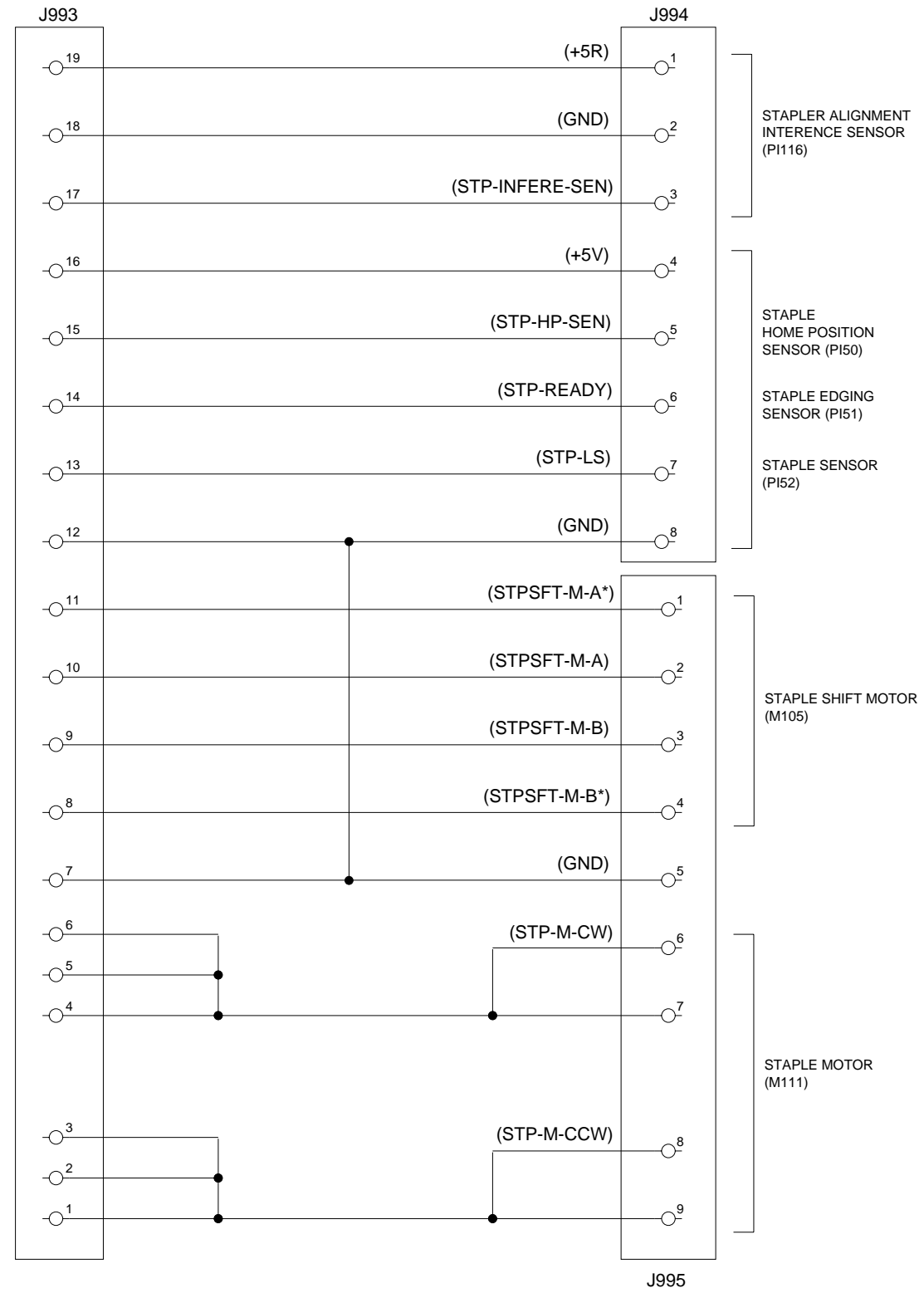


2 Stapler PCB 1
Stapler PCB1



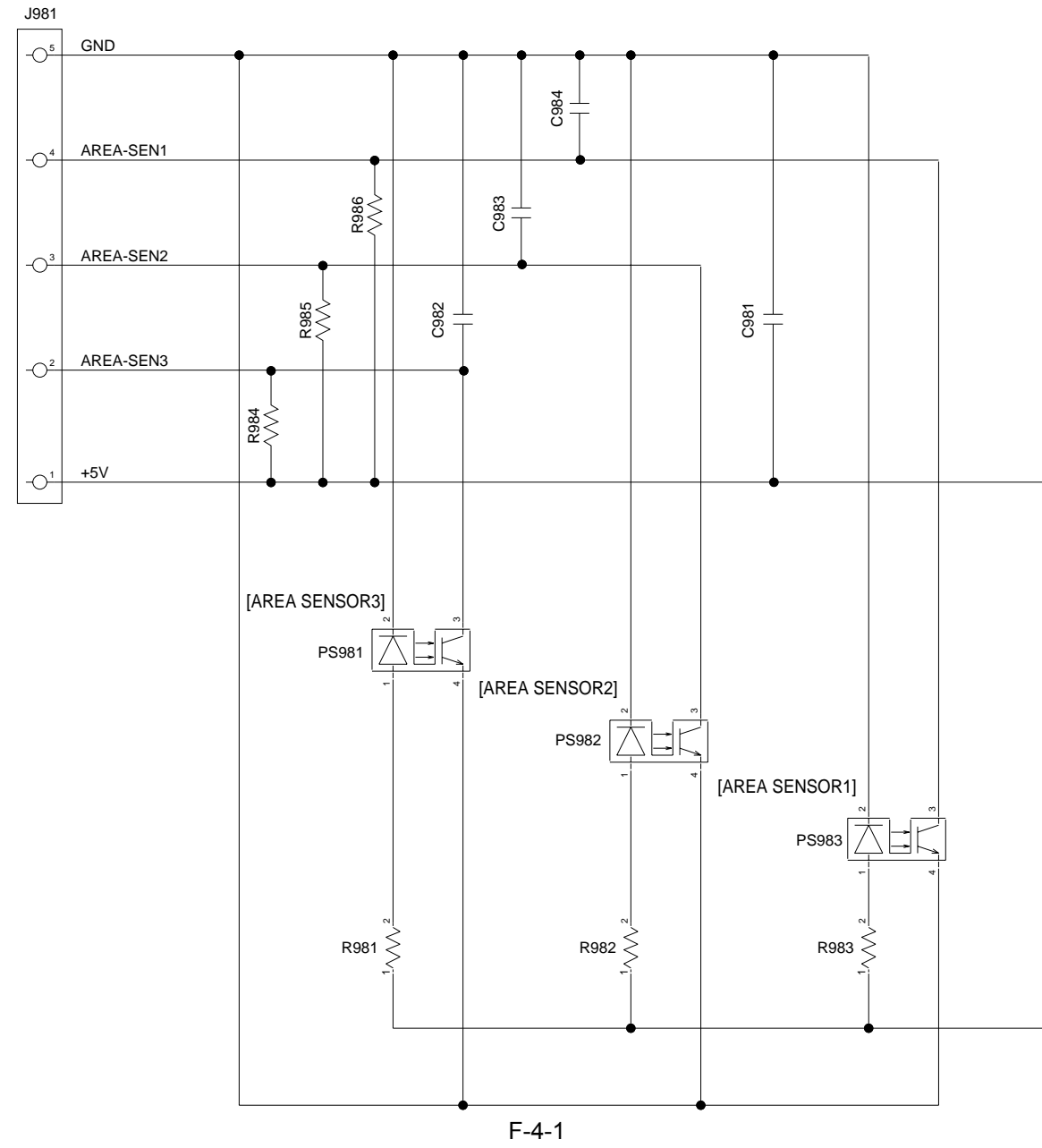
F-2-1

3 Stapler PCB 2
 Stapler PCB2



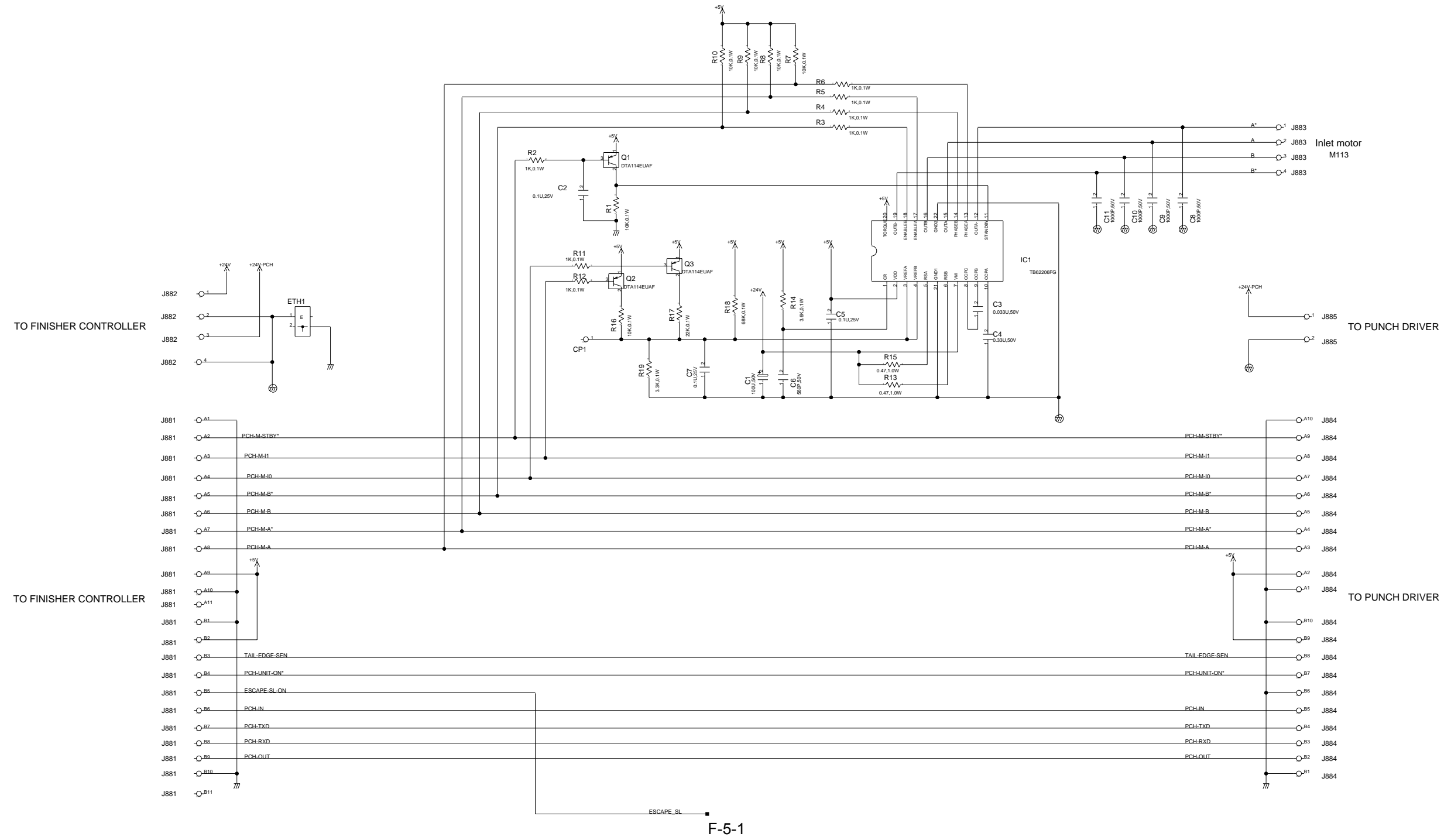
F-3-1

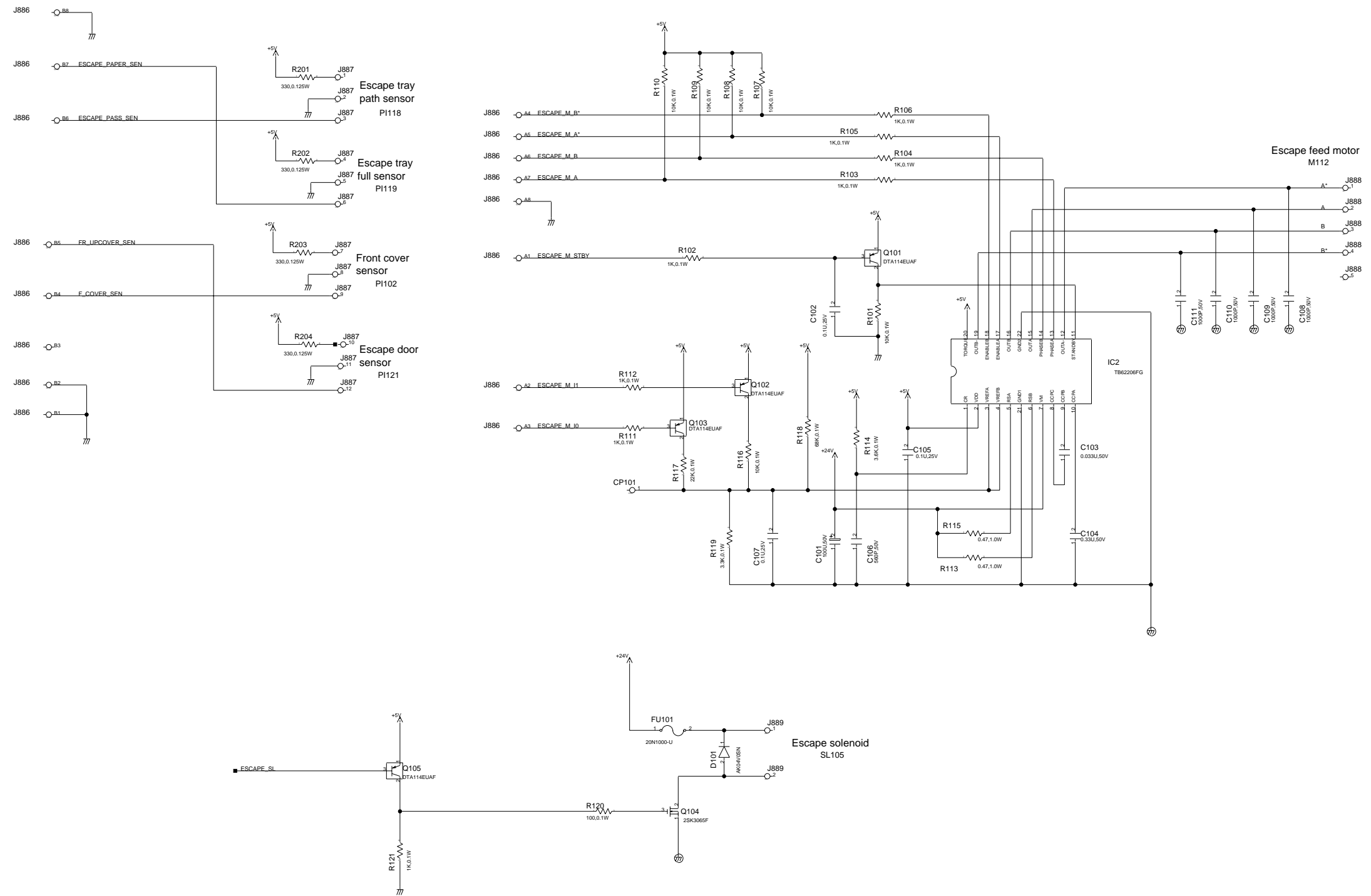
4 Tray2 Shift Area Sensor PCB
Tray1/Tray2 Shift Area Sensor PCB



5 Feeder Driver PCB

Feeder Driver PCB (1/2)





F-5-2

Feb 21 2005

Canon

